

**Anti-CD184 Antibody**  
**Rabbit polyclonal antibody to CD184**  
**Catalog # AP60446****Specification**

---

**Anti-CD184 Antibody - Product Information**

Application	WB
Primary Accession	<a href="#">P61073</a>
Other Accession	<a href="#">P70658</a>
Reactivity	Human, Mouse, Rat, Rabbit, Monkey, Pig, Bovine, SARS, Dog
Host	Rabbit
Clonality	Polyclonal
Calculated MW	39746

**Anti-CD184 Antibody - Additional Information****Gene ID** 7852**Other Names**

C-X-C chemokine receptor type 4; CXC-R4; CXCR-4; FB22; Fusin; HM89; LCR1; Leukocyte-derived seven transmembrane domain receptor; LESTR; Lipopolysaccharide-associated protein 3; LAP-3; LPS-associated protein 3; NPYRL; Stromal cell-derived factor 1 receptor; SDF-1 receptor; CD184

**Target/Specificity**

Recognizes endogenous levels of CD184 protein.

**Dilution**

WB~~WB (1/500 - 1/1000)

**Format**

Liquid in 0.42% Potassium phosphate, 0.87% Sodium chloride, pH 7.3, 30% glycerol, and 0.09% (W/V) sodium azide.

**Storage**

Store at -20 °C. Stable for 12 months from date of receipt

**Anti-CD184 Antibody - Protein Information****Name** CXCR4**Function**

Receptor for the C-X-C chemokine CXCL12/SDF-1 that transduces a signal by increasing intracellular calcium ion levels and enhancing MAPK1/MAPK3 activation (PubMed: [10452968](http://www.uniprot.org/citations/10452968), PubMed: [18799424](http://www.uniprot.org/citations/18799424), PubMed: [24912431](http://www.uniprot.org/citations/24912431), PubMed: [28978524](http://www.uniprot.org/citations/28978524)). Involved in

the AKT signaling cascade (PubMed:<a href="http://www.uniprot.org/citations/24912431" target="\_blank">24912431</a>). Plays a role in regulation of cell migration, e.g. during wound healing (PubMed:<a href="http://www.uniprot.org/citations/28978524" target="\_blank">28978524</a>). Acts as a receptor for extracellular ubiquitin; leading to enhanced intracellular calcium ions and reduced cellular cAMP levels (PubMed:<a href="http://www.uniprot.org/citations/20228059" target="\_blank">20228059</a>). Binds bacterial lipopolysaccharide (LPS) et mediates LPS-induced inflammatory response, including TNF secretion by monocytes (PubMed:<a href="http://www.uniprot.org/citations/11276205" target="\_blank">11276205</a>). Involved in hematopoiesis and in cardiac ventricular septum formation. Also plays an essential role in vascularization of the gastrointestinal tract, probably by regulating vascular branching and/or remodeling processes in endothelial cells. Involved in cerebellar development. In the CNS, could mediate hippocampal-neuron survival (By similarity).

### Cellular Location

Cell membrane; Multi-pass membrane protein. Cell junction. Early endosome. Late endosome. Lysosome. Note=In unstimulated cells, diffuse pattern on plasma membrane. On agonist stimulation, colocalizes with ITCH at the plasma membrane where it becomes ubiquitinated. In the presence of antigen, distributes to the immunological synapse forming at the T- cell-APC contact area, where it localizes at the peripheral and distal supramolecular activation cluster (SMAC)

### Tissue Location

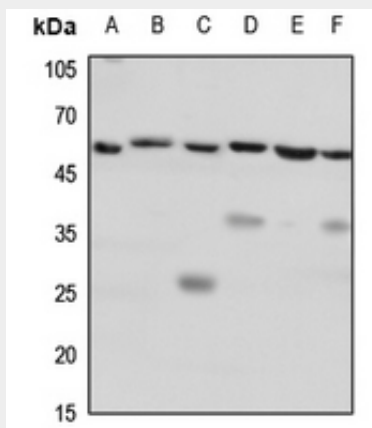
Expressed in numerous tissues, such as peripheral blood leukocytes, spleen, thymus, spinal cord, heart, placenta, lung, liver, skeletal muscle, kidney, pancreas, cerebellum, cerebral cortex and medulla (in microglia as well as in astrocytes), brain microvascular, coronary artery and umbilical cord endothelial cells Isoform 1 is predominant in all tissues tested

## Anti-CD184 Antibody - Protocols

Provided below are standard protocols that you may find useful for product applications.

- [Western Blot](#)
- [Blocking Peptides](#)
- [Dot Blot](#)
- [Immunohistochemistry](#)
- [Immunofluorescence](#)
- [Immunoprecipitation](#)
- [Flow Cytometry](#)
- [Cell Culture](#)

## Anti-CD184 Antibody - Images



Western blot analysis of CD184 expression in Hela (A), mouse lung (B), mouse spleen (C), mouse heart (D), rat spleen (E), rat heart (F) whole cell lysates.

**Anti-CD184 Antibody - Background**

KLH-conjugated synthetic peptide encompassing a sequence within the C-term region of human CD184. The exact sequence is proprietary.